



19 Jubilee Street

, Middlesbrough, TS3 6HZ

£560



19 Jubilee Street

, Middlesbrough, TS3 6HZ

£560



HALLWAY

Step in from the street through a sturdy white UPVC double-glazed door and find yourself in a sunlit hallway. Natural light spills across the space, highlighting clean lines and inviting you further inside. From here, you can head straight into the welcoming reception and dining area or take the stairs up to the first floor.

RECEPTION/ DINING ROOM

At the front of the room, you'll find the reception area, spacious enough for a comfortable two-piece suite and several storage units. Natural light pours in through a UPVC double glazed window, while a radiator keeps the space warm and inviting. Toward the back of the room, the dining area opens up, easily fitting a large dining table—perfect for family meals or entertaining guests. Another UPVC double glazed window brightens the area, and from here, you have direct access to the kitchen, making the flow between spaces seamless and practical.

KITCHEN

The kitchen features a collection of light wood effect cabinets, including both wall-mounted and base units, as well as matching drawers. These are paired with deep, dark countertops

that create a striking visual contrast. There's ample room for free-standing appliances, making the space practical and adaptable. Natural light pours in through a UPVC double glazed window, while a matching door provides easy access to the rear yard, blending indoor and outdoor living.

LANDING

The landing gains access to the two spacious bedrooms, family bathroom and loft.

BEDROOM ONE

The first bedroom sits at the front of the house, catching plenty of natural light through a large UPVC double glazed window. There's ample space for a comfortable double bed, as well as additional storage units or a wardrobe. A radiator keeps the room warm and inviting, making it a cozy retreat at any time of year.

BEDROOM TWO

The second bedroom sits at the heart of the first floor, offering a cozy space that comfortably fits a small double bed along with generous storage options like tall wardrobes or shelving. Natural light pours in through a UPVC double glazed window, while a radiator keeps the room warm and inviting year-round.

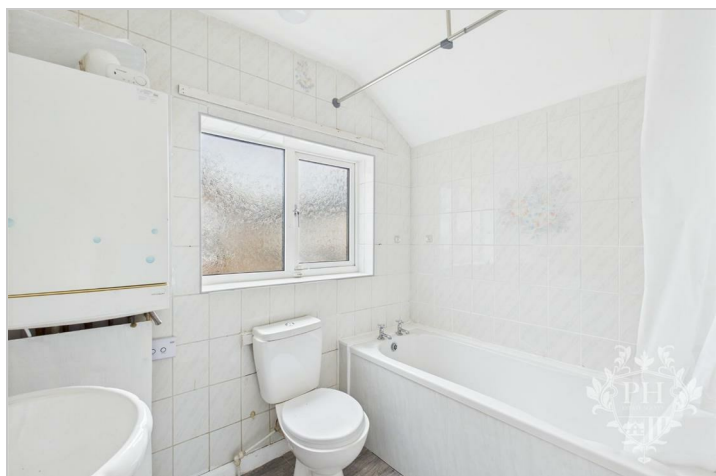
Tel: 01642 462153

BATHROOM

The bathroom features a classic three-piece suite, consisting of a deep paneled bathtub perfect for relaxing soaks, a hand basin with ample counter space, and a low-level toilet. Natural light filters in through a frosted UPVC double-glazed window, offering privacy while brightening the space. A radiator provides warmth, and the partially tiled walls add both style and practicality, protecting against splashes and making cleaning a breeze.

EXTERNAL

This property features convenient on-street parking and a secure rear yard, perfect for added peace of mind or outdoor activities. Located just minutes away by foot or car from shops, schools, and major bus routes, it offers easy access to everything you need for daily living.



Road Map



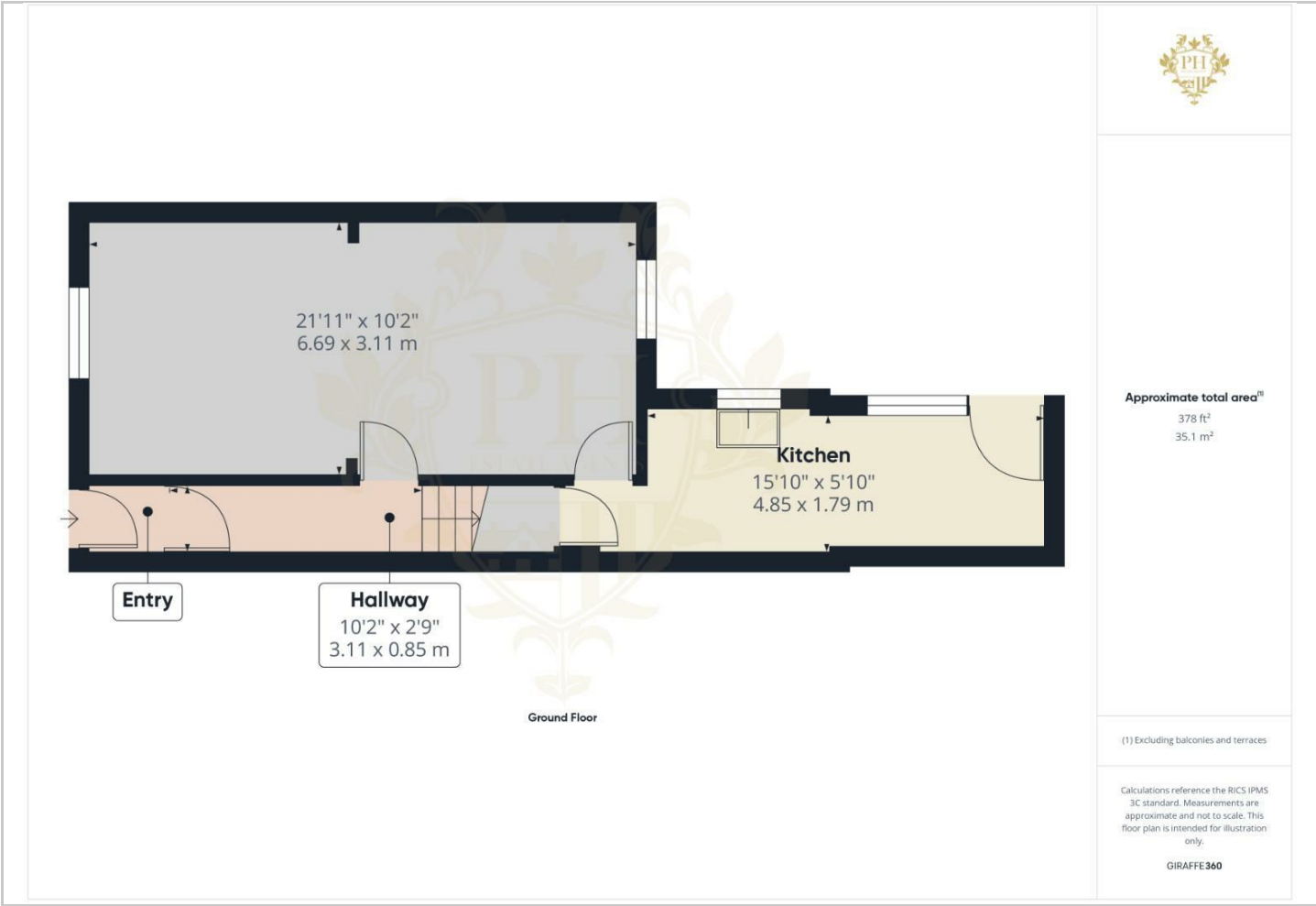
Hybrid Map



Terrain Map



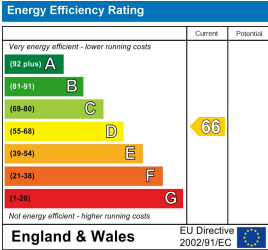
Floor Plan



Viewing

Please contact our Middlesbrough Office on 01642 462153 if you wish to arrange a viewing appointment for this property or require further information.

Energy Efficiency Graph



These particulars, whilst believed to be accurate are set out as a general outline only for guidance and do not constitute any part of an offer or contract. Intending purchasers should not rely on them as statements of representation of fact, but must satisfy themselves by inspection or otherwise as to their accuracy. No person in this firms employment has the authority to make or give any representation or warranty in respect of the property.